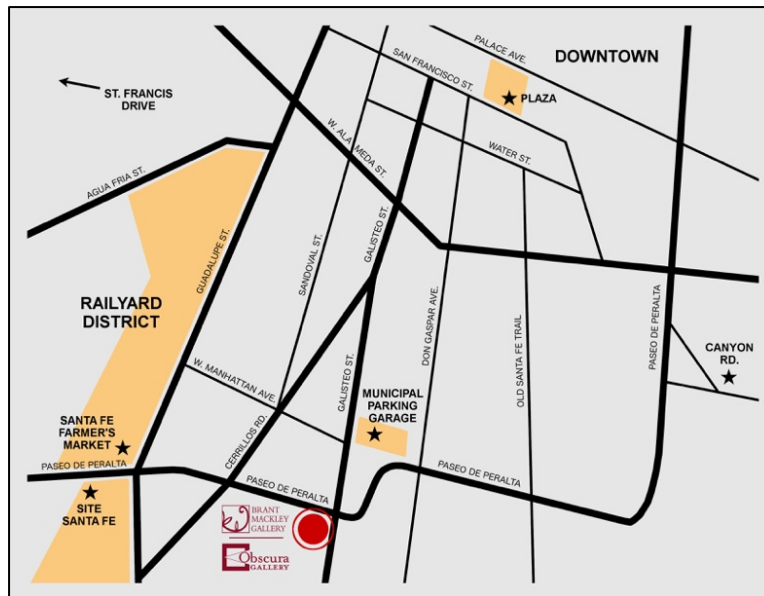




FOR IMMEDIATE RELEASE - March 30, 2018

**Brant Mackley Gallery and Obscura Gallery Hold Joint Grande Opening
at Newly Renovated Gallery Space in Santa Fe, New Mexico**

Grande Opening Reception: Friday, June 22, 2018, 4-7pm



Brant Mackley Gallery and Obscura Gallery are proud to announce a joint Grande Opening Reception of their newly renovated shared gallery space at 1405 Paseo de Peralta in Santa Fe, New Mexico on June 22, 2018. Located in the Santa Fe downtown historic district two blocks east of the revitalized Railyard district in a renovated historic building, the two business entities will co-occupy the 3,000 square-foot location. Obscura Gallery represents fine art photography with a special interest in contemporary approaches to the medium and vintage 19th-20th Century works. Brant Mackley Gallery specializes in exceptional antique North America Indian, Oceanic, Asian, and African art. The Grande Opening Exhibition will include a curated selection of each Gallery's inventory.

The historically renovated building space shared by both galleries was built in 1932, and was home to the community grocery store called the Ortiz Food Store in the 1940's. The second story addition of the building hosted the Mayor's office during the Frank Ortiz mayoral term 1948-1952 while the grocery store continued below. The building also housed the Madayln photo studio in the 1970's and most recently the Gold Leaf Framemakers in the 1990's. Today the building was renovated as a commercial/residential occupancy and includes all new electric, plumbing, heating, and interior redesign while still keeping with the tradition of the adobe elements and historical qualities of the region.

1405 Paseo de Peralta, Santa Fe, New Mexico 87501

ABOUT THE GALLERIES:

Brant Mackley Gallery showcases exceptional antique American Indian and World tribal art. A second-generation art and antiques dealer from Hershey, Pennsylvania, Brant started his career as a child, collecting historic Plains Indian artifacts while accompanying his mother to antique auctions in Central Pennsylvania. As a result of his parental exposure to the buying and selling of antique and historic tribal art objects Brant established his own gallery in 1996. Today, Brant Mackley Gallery is based in two locations: Hershey, Pennsylvania and historic Santa Fe, New Mexico. In addition, the gallery offers collection appraisals, conservation consultation, curatorial guidance, and the purchasing of single objects or entire collections of North America Indian, Oceanic, Asian, and African art.

With more than 30 years of experience, Brant has placed numerous important works of art and artifacts in both private and public collections worldwide. Adding to his national recognition, in 2008-2009, Brant served as guest curator of the “Rainbow Yarn: Navajo Weaving, Germantown Yarn & the Pennsylvania Collection” exhibition hosted by the Lancaster Quilt and Textile Museum (The Heritage Center, Lancaster County) and co-authored the exhibition catalog. In addition to curatorial work, in 2009 Mackley’s article on “Navajo Pictorial Textiles” was published in the renowned Hali textile magazine, London. Among his other accomplishments, for six years Brant sat on the Board of Governors for ATADA (Antique Tribal Art Dealers Association) where he also served two full terms as the vice president. In addition, The Brant Mackley Gallery has participated in several renowned national and international art fairs including the Parours des Mondes (Paris, France,) Tribal Art Fair Amsterdam (TAF), San Francisco Tribal & Textile Arts Show, Whitehawk Invitational American Indian Art Show (Santa Fe, NM), TAAS show & New York Tribal Fair., and Philadelphia Antiques Show, PA, as well as many others. In addition, Brant Mackley Gallery is a long standing member of the prestigious Antique Dealers of America (ADA).



Delaware Bandelier Bag, 1840-1860, 31x23”

1405 Paseo de Peralta, Santa Fe, New Mexico 87501



Pennsylvania Folk Art Rocking Horse, 1840-1870, 40.5 x 25.5"



Southern Plains Bead-decorated Cradleboard, Kiowa or Comanche, circa 1870's
35 3/4 in. x 11 in. x 7 in

1405 Paseo de Peralta, Santa Fe, New Mexico 87501

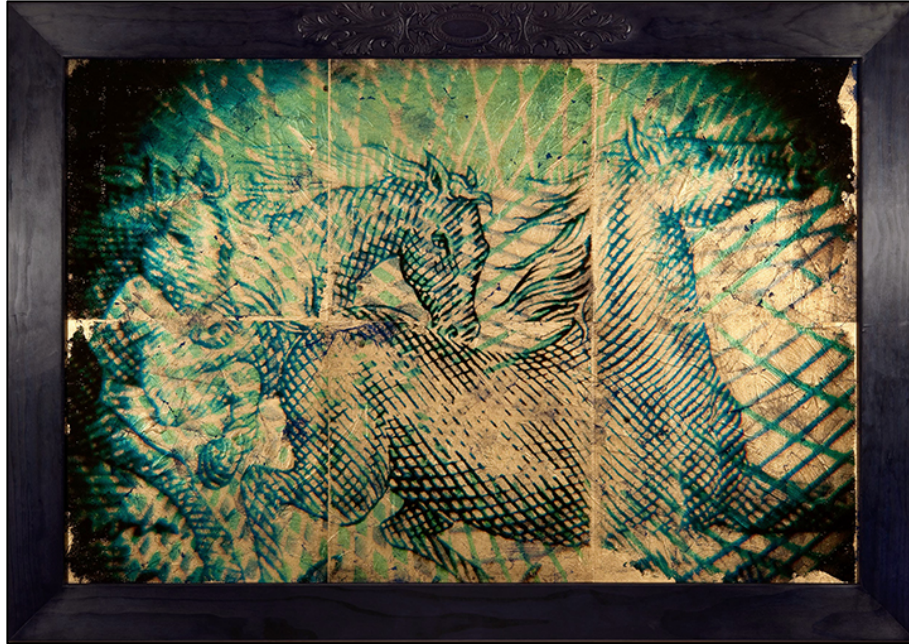
Obscura Gallery was formed by Owner and Director Jennifer Schlesinger. A photography dealer, and artist herself, Jennifer brings to Obscura Gallery the experience of being the Director of Verve Gallery of Photography in Santa Fe, New Mexico for eleven years until they closed in 2017. Obscura Gallery, conceived in 2016, and named after the original Camera Obscura, was founded on Jennifer's passion for photography which is deeply rooted in the history of the medium. The Gallery encourages the ways in which contemporary artists are using photography to create unique additions to the history of the medium which began nearly 200 years ago. The contemporary artists represented are William Albert Allard (Charlottesville, VA), Michael Berman (Mimbres Valley, NM), Susan Burnstine (Los Angeles, CA), Debbie Fleming Caffery (Lafayette, LA), Brigitte Carnochan (Portola Valley, CA), Cy DeCosse (Minneapolis, MN), Lawrence Fodor (Santa Fe, NM), Neil Folberg (Jerusalem, Israel), Coco Fronsac (Paris, France), Louviere + Vanessa (New Orleans, LA), Kurt Markus (Santa Fe, NM), Michael Massaia (New Jersey), Norman Mauskopf (Santa Fe, NM), Caitlyn Soldan (Santa Fe, NM), Aline Smithson (Los Angeles, CA), Keith Taylor (Minneapolis, MN), and Curtis Werhfritz (Toronto, Canada). In addition to holding exhibitions and offering for sale the artwork by Obscura Gallery's roster of artists and other 19th-21st gallery inventory, they also offer collection building, consulting and advising, as well as estate representation, and consignments. Obscura Gallery was granted a membership to the highly regarded Association of International Photography Art Dealers (AIPAD) in 2016.

Jennifer is a long time Santa Fe resident, moving to the area from Connecticut in 1996 to graduate from the College of Santa Fe with a B.A. in Photography and Journalism in 1998. Schlesinger has exhibited her own art widely at Southwest regional institutions such as the Marion Center for Photographic Arts, Santa Fe Art Institute and the New Mexico Museum of Art, as well as national institutions such as the Southeast Museum of Photography and the Chelsea Art Museum. Schlesinger is represented in many public collections, including the Southeast Museum of Photography, FL; The New Mexico Museum of Art, and the New Mexico History Museum / Palace of the Governors Photo Archives. She has received several honors in recognition of her work including a Golden Light Award in Landscape Photography from the Maine Photographic Workshops and the Center for Contemporary Arts Photography Award in Santa Fe, New Mexico, both in 2005. She was the Assistant Director of Santa Fe Art Institute from 2003-2005 and was the Director of Verve Gallery of Photography from 2005-2017 before becoming the Owner and Director of Obscura Gallery.



MICHAEL MASSAIA, *Central Park, Clock Installation*, 2016, gelatin silver print, available in three sizes.

1405 Paseo de Peralta, Santa Fe, New Mexico 87501



Louviere + Vanessa, *It was their fear teasing the torches....*, 2010
38x55", Gold leaf and resin with artists' hand made frame, edition of 5.



MICHAEL BERMAN, *96.s.84.04 Snake 9 plates*, 2015
nine 5.5 x 5.75" plates, each a gelatin silver photo, pigment and acrylic on aluminum.

1405 Paseo de Peralta, Santa Fe, New Mexico 87501

For more information contact:

Jennifer Schlesinger
info@obscuragallery.net
505-577-6708
www.obscuragallery.net

Brant Mackley
brant@bmgart.com
505-670-2447
www.brantmackleygallery.com