



**For Immediate Release - November 15, 2018**

**Obscura Gallery Presents**

**Paige Pinnell: The Artist as Collector**

*An Exhibition of the Photographic Collection and Personal Works by Paige Pinnell*

**Opening Reception January 11, 2019**

**The exhibition is on view January 11, 2019 through February 23, 2019**

**THE EXHIBITION**

Obscura Gallery presents our first in an ongoing exhibition series of *The Artist as Collector*, debuting the series with the photographic collection and personal works of the late Santa Fean, Paige Pinnell. Pinnell, who passed away in 2017, embodied the passion for photography by being a photography dealer, artist, educator, and collector. Paige's deep knowledge of and connection to photography on a national level had influence on many in the local Santa Fe community in the 1960-70's and was integral to what would become the development of the photography market in Santa Fe at that time. Obscura Gallery is honored to present this exhibition of works for sale to pay tribute to Pinnell's photographic legacy.

The exhibition opens with a reception on Friday, January 11, 2019 from 5-7pm at Obscura Gallery, 1405 Paseo de Peralta, Santa Fe, New Mexico. The exhibition is on view through February 23, 2019.

## THE STUDENT, TEACHER, AND ARTIST

Paige was born in Macon, Georgia in 1944 and graduated from Gainesville High School in Florida. Following high school he entered the University of Florida, where he received a Bachelor of Fine Arts in Photography in 1967. It was at the University of Florida where he befriended and studied with the darkroom composite photographer and guru Jerry Uelsmann who was set to be a mentor in Paige's life and career. Paige moved to New Mexico in 1969, where he received an MFA in photography and the history of photography from the University of New Mexico in 1971, under the direction of Van Deren Coke, another named mentor in Paige's life as a photographer.



Jerry Uelsmann, *The Quest of Continual Becoming*, 1965, 12 x 9.75", gelatin silver print.

Over a 12-year period Paige taught at the University of New Mexico, the University of Florida, the University of Oregon, and the University of California, Berkeley. He hosted the Santa Fe/Dallas Photographic Workshops for twelve summers. He also taught photography at the Brunn school in Santa Fe, an alternative school for ages 10-19. He was the Curator at the Museum of New Mexico in Santa Fe from 1972 to 1976 and he was the Director of the Center of the Eye Gallery when it moved to Santa Fe from 1975 to 1976.



Paige Pinnell, *Oddfellow's Eyes*, 1973, (Included in the New Mexico Portfolio), 4.75 x 13.5", Gelatin silver print

Paige was an accomplished and exhibited photographer at the time, who created complex photomontages, using multiple-negative techniques prior to the development of digital photography. He created serial overlapping images attempting to invoke surrealism through expanding the time and space of a single photographic frame. Most of his black and white work was created in the 1960's through the early 1970's, and his color work was created in the 1980's. His noted influences were Clarence John Laughlin, Jerry Uelsmann, and Ralph Meatyard, among others. Paige's photographs were exhibited numerous times in Santa Fe including a major exhibition titled *Color Photographs by Paige Pinnell*, at the Governor's Gallery of Photography in 1988.

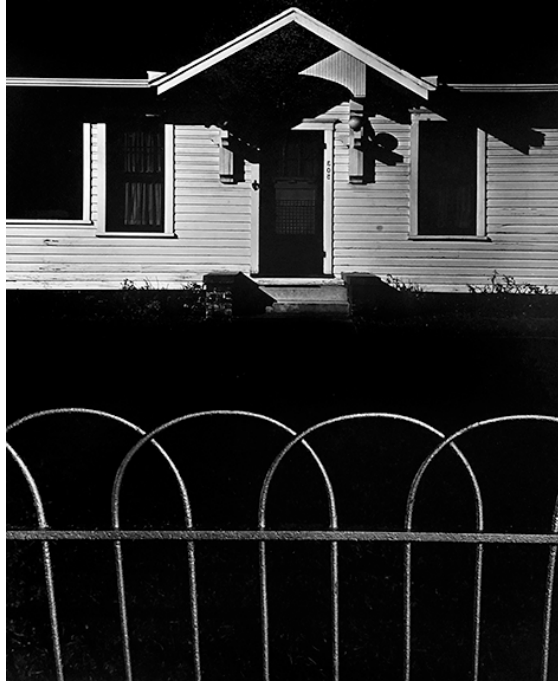


Paige Pinnell, *Untitled*, c.1980's, 13.25 x 19.5", Cibachrome print.

The exhibitions that took place in the Governor's Gallery "for photographers such as Paige Pinnell, Barbara Van Cleve, Walter Chappell, David Noble, Barbara Zusman, Eliot Porter, and others, highlighted the creativity and diversity within the medium and spurred the decision to dedicate an additional space within the Governor's Office confines (dubbed the "Governor's Gallery Photography Alcove") to have stand-alone displays of photography." (from James Rutherford, <http://www.studiopassport.com>).

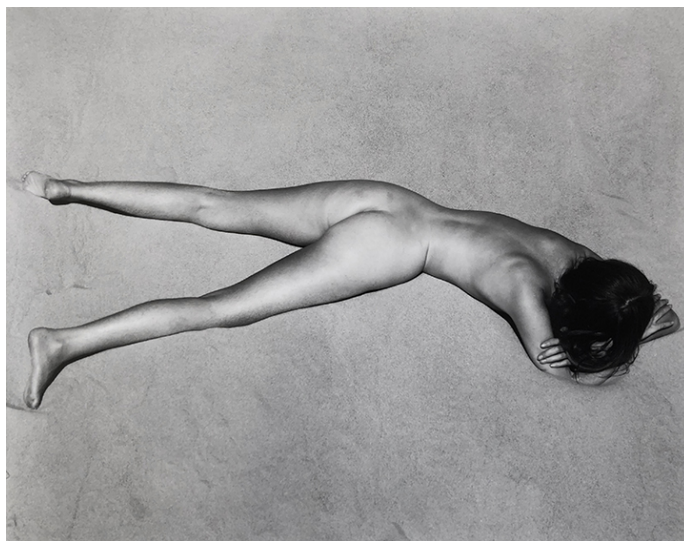
1405 Paseo de Peralta, Santa Fe, New Mexico 87501 info@obscuragallery.net

WWW.OBSCURAGALLERY.NET



Paige Pinnell, *Night House, Gainesville*, 1967, 9.5 x 7.5", gelatin silver print

Two Santa Fe esteemed dealers - photography dealer Andrew Smith of Andrew Smith Gallery, and book dealer Nicholas Potter of Nicholas Potter Bookseller - have both noted that Paige was integral to introducing them to a world of photographers in the 1960's including Paul Strand, Edward Weston, Harry Callahan, Gary Winogrand, Minor White, Lee Friedlander, and many, many others. As they both have said, Paige had a major influence on their lives and then future careers.



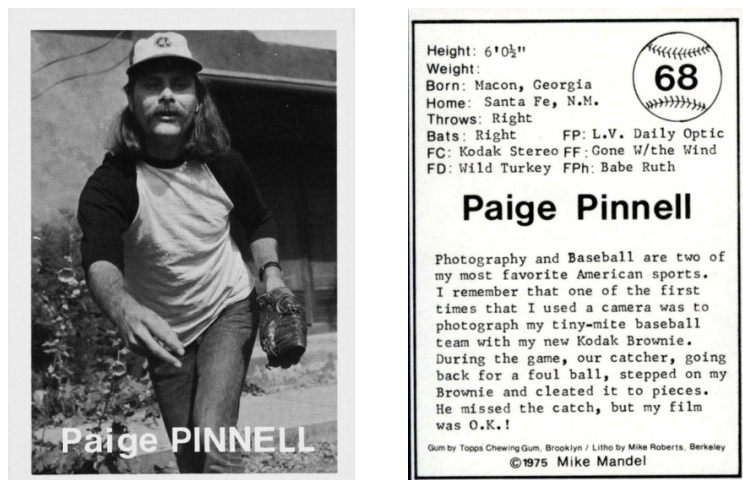
Edward Weston, (printed later by Cole Weston), *Nude*, 1936, 7.25 x 9.5", Gelatin silver print.

Paige was instrumental in bringing photography to the forefront in Santa Fe. He held photo shows in the back room of Nicholas Potter's bookstore. He was the Director of the Center of the Eye Gallery when it put out a limited edition portfolio of which will be in this exhibition titled, *The New Mexico Portfolio*. The portfolio was directed by Alex Traube, produced by Andrew Smith and Paige Pinnell, and includes introductory texts by Beaumont Newhall and Henry Man Barendse. The portfolio includes 20 prints from prominent regional photographers Beaumont Newhall, Thomas Barrow, Betty Hahn, Van Deren Coke as well as Paige himself, and many other noted photographers. The portfolio is now in the prestigious collection of the Center for Creative Photography, Tucson, Arizona.



*The New Mexico Portfolio*, 1976, A Portfolio of 20 prints by New Mexico Photographers.

In 1975, Mike Mandel photographed Paige Pinnell for his Baseball Photographer Trading Card Set along with cards for Imogen Cunningham, Jerry Uelsmann, Tom Barrow, Carl Chiarenza, Betty Hahn, Todd Walker, Beaumont Newhall, Van Deren Coke, John Szarkowski, Ansel Adams, Anne Tucker, Laura Gilpin, and many other prominent influential photographers.

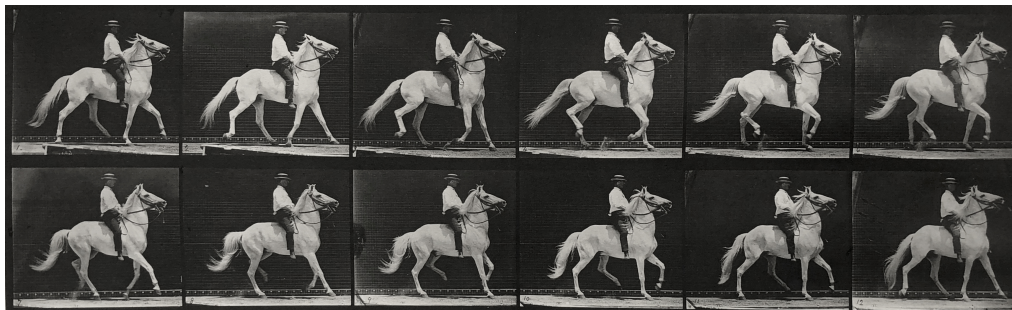


## THE COLLECTOR



Todd Webb, *3rd Avenue El looking south from Fulton Street Station, NYC, 1948*, 8.25 x 6.5", gelatin silver print.

In addition to his teaching and his art, Paige Pinnell was also a photography dealer and collector. Many of the prints that found their way into Paige's collection began in his early days of teaching and studying with prominent photographers at the Universities. Most of his collection was acquired in the 1960's including Minor White, Wynn Bullock, William Henry Jackson, Weegee, Ralph Meatyard, and others. However most of these were de-accessioned toward the end of his life when he got ill. There is still a resounding beautiful collection in his estate of which will be on exhibit and for sale in this exhibition including the works of Edward Weston, Todd Webb, Todd Walker, Anne Noggle, Paul Caponigro, Jerry Uelsmann, Henry Holmes Smith, Eadward Muybridge, and many others.



Eadward Muybridge, *Animal Locomotion (Plate 589)*, collotype, 5.5 x 18"

Paige had encyclopedic knowledge of New Mexico and Southwestern history, with particular interest in the Santa Fe Ring and Native American cultures in the Southwest. This incredible knowledge resulted in the acquisition of many regional photographers for his collection and are also included in this exhibition such as Edward Curtis, Ben Wittick, William Henry Jackson, and Laton Huffman. In addition, he also collected Native American items such as Kachinas and other regional material that will also be included in the exhibition.

1405 Paseo de Peralta, Santa Fe, New Mexico 87501 [info@obscuragallery.net](mailto:info@obscuragallery.net)

[WWW.OBSCURAGALLERY.NET](http://WWW.OBSCURAGALLERY.NET)



*Edward Curtis, Girl and Jar, San Ildefonso, NM, plate 590, 1905, 15.5 x 11.5", photogravure on Holland Van Gelder paper from Portfolio 17*

Given Paige Pinnell's extensive involvement in the development of photography as a marketed art form in Santa Fe at the time, as well as his career as artist, dealer, educator and collector, Obscura Gallery is honored to present this exhibition to pay tribute to Paige's photographic legacy.

**All photographs in the exhibition are courtesy the Paige Pinnell Estate.**

**For more information, contact Jennifer Schlesinger at:**

**[info@obscuragallery.net](mailto:info@obscuragallery.net)**

**505-577-6708**

### **THE GALLERY LOCATION AND HOURS**

Obscura Gallery is located in the Santa Fe downtown historic district two blocks east of the revitalized Downtown Railyard district. Gallery hours are Tuesday – Saturday, 11-5pm and by appointment.

Parking is limited. Additional parking is available Monday – Friday from 8:00am – 9:00pm at the State Capitol Parking Facility municipal garage located at 485 Galisteo Street. There is also metered parking always available on Galisteo street next to the Parking Facility.

1405 Paseo de Peralta, Santa Fe, New Mexico 87501 [info@obscuragallery.net](mailto:info@obscuragallery.net)

[WWW.OBSCURAGALLERY.NET](http://WWW.OBSCURAGALLERY.NET)